

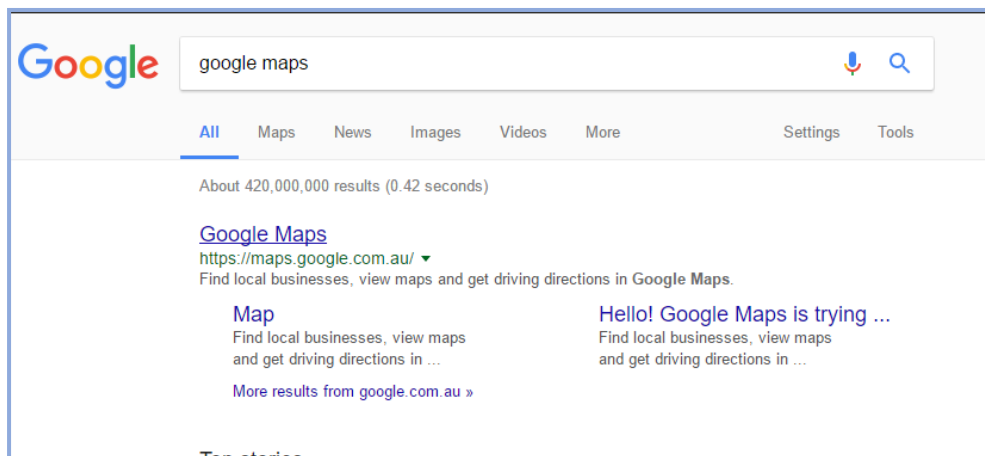
How to Find Co-ordinates for your Durum Paddock

There are many ways to get the Latitude and Longitude co-ordinates to identify where your area based durum paddocks are, for example, yield mapping software or an auto-steer screen. Below are two simple ways to get the co-ordinates using your laptop or desktop.

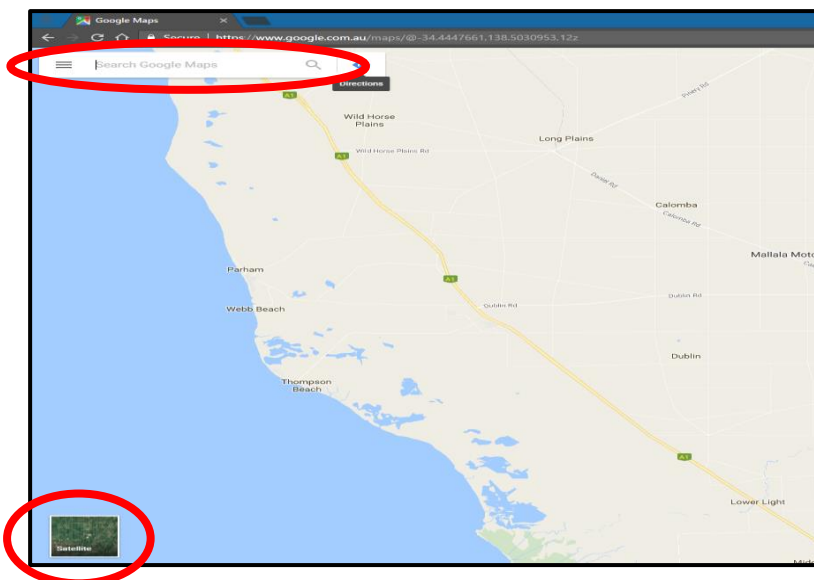
For the purpose of paddock identification, pick a point that is approximately the centre of the paddock and record the latitude and longitude on the Mellco Area Based Durum Contract Firm Offer form (in the GPS co-ordinates “box”).

Option 1: Using Google Maps

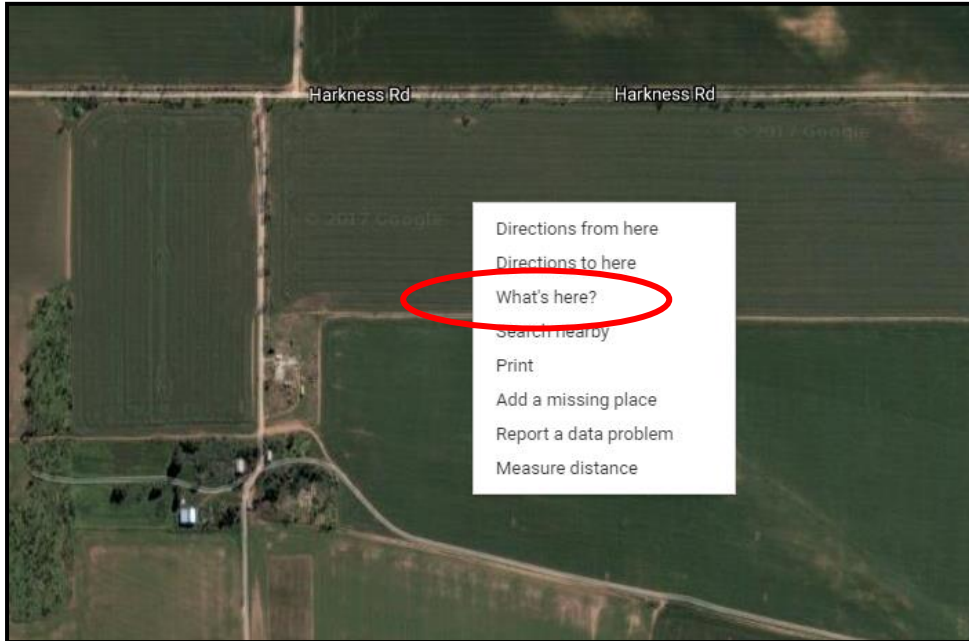
1. Type “Google Maps” into your internet browser search engine> Click on the *Google Maps* link (it should be the top search result), or, click on this link <https://maps.google.com.au>.



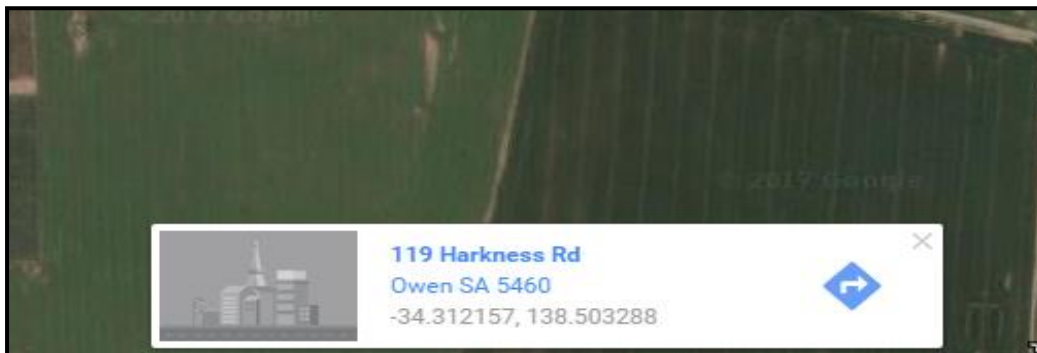
2. You can type your address or closest town into the search box in the top left hand corner to help locate your paddock. If Google Maps does not open in 'Satellite' mode, click the icon down the bottom left corner. This will show individual paddocks.



3. Right click on the centre of the durum paddock you wish to locate. Choose the 'What's here?' option.



4. Google Maps will show a dialog box that contains a Latitude and Longitude. The smaller, negative number (if Google Maps is set to decimal degrees) is the Latitude. The larger, positive number is the Longitude.

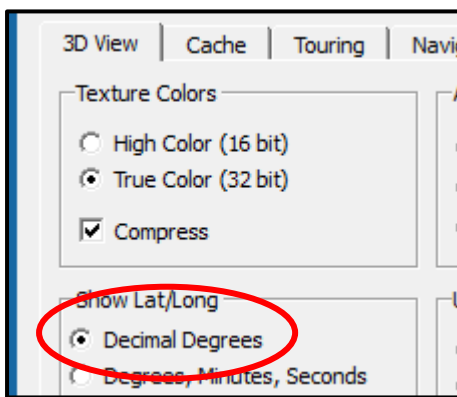
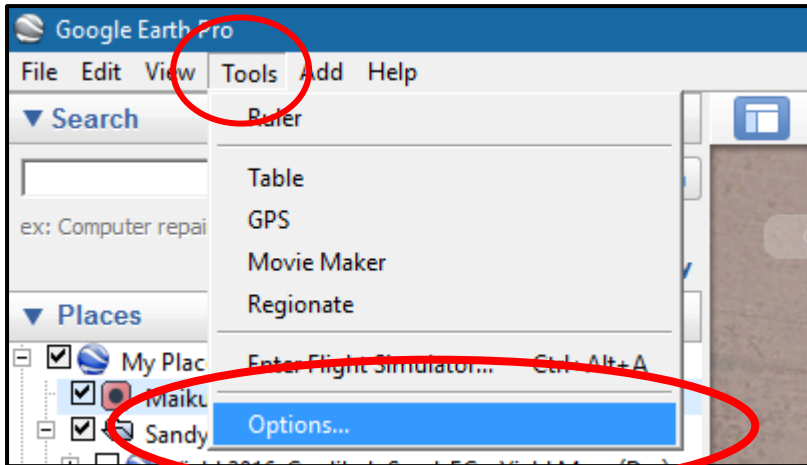


Option 2: Using Google Earth Pro


If you have Google Earth Pro on your PC, you may want to use Option 2.

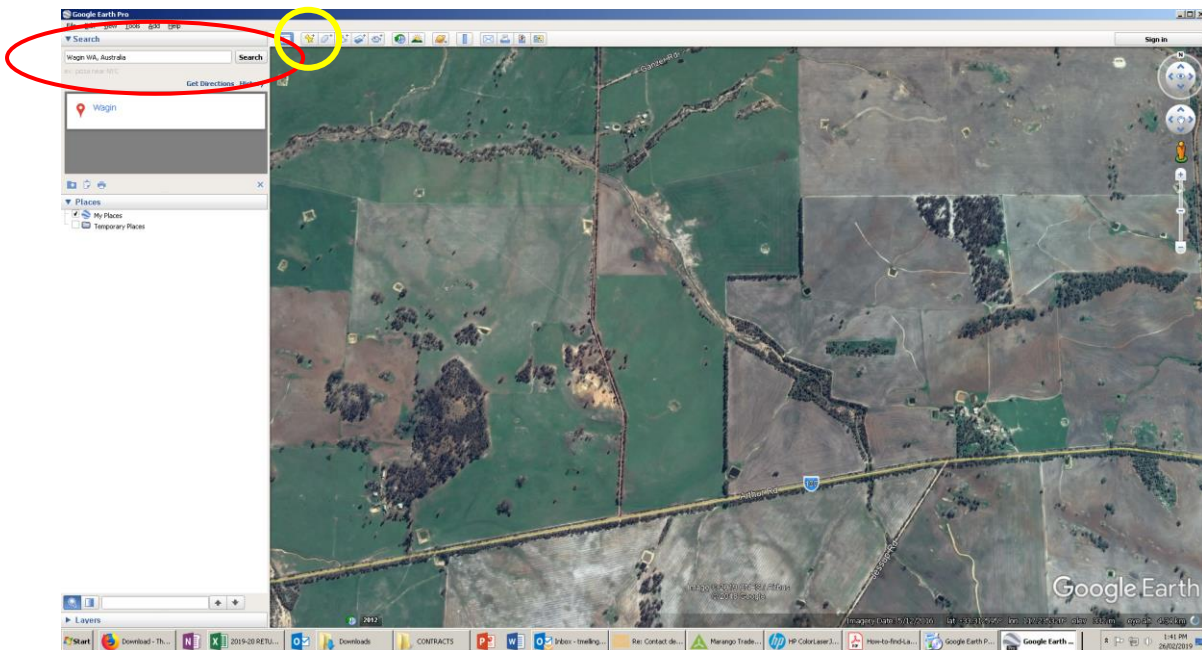
Open Google Earth Pro.


Recording the latitude and longitude in **Decimal degrees** would be preferred, so go to TOOLS> OPTIONS... > and click the "Decimal Degrees" > OK.



Enter your address in the search box. Search

Click on the yellow pin  in the tool box at the top of the map. The pin will appear somewhere on the map.



Click on the pin  and drag it to the correct paddock, locate the pin in the centre of the paddock. The longitude and latitude will appear in the dialogue box on the left hand side of the map.

